

# KEL-FW | Split bulkhead for 90° cable entry

for cables with connectors and a large bending radius / IP65



The new bulkhead KEL-FW is perfect for routing cables with/without connectors at a 90° angle over a large bending radius (max. 150 mm).

The hinged cover of the new bulkhead KEL-FW is firmly connected to the housing by a hinge and is therefore captive. This makes the system very easy and quick to mount. The KEL-FW is first screwed to the enclosure using the two rear holes and then fitted with the required cable grommets. The cover is then folded down, locked in place and screwed to the enclosure using the two front holes.

The KEL-FW is fitted with an integrated seal to achieve the high protection rating of IP65 (when using single hole grommets). An additional flat gasket for wall mounting is included in the shipment.

Cables with and without connectors up to a diameter of 35 mm can be routed and strain-relieved according to EN 62444. Retrofitting and maintenance can be carried out quickly and easily.

IP65

IP64

IP55

IP54



ECOLAB certified

RoHS compliant

REACH COMPLIANCE

Made in Germany

## Specifications

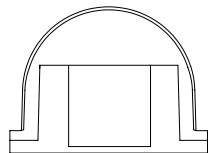
<b>IP rating (EN 60529)</b>	IP65, IP64, IP55, IP54
<b>Material</b>	Polyamide
<b>Flame class</b>	UL94-V0, self-extinguishing
<b>Operating temperature</b>	-40 C° to 90 C°
<b>Properties</b>	silicone free, halogen free
<b>Mounting options</b>	Screw type mounting

## Advantages & benefits

- Hinged cover
- Integrated seal
- Cable entry at 90° to the enclosure
- Large bending radius of the routed cables possible (r max. = 150 mm)
- Mechanical protection of the cable directly at the place of entry
- Protection against water splashes and drips
- Warranty on pre-terminated cables remains
- Retrofittings and maintenance can be done quickly and easily
- Ideal for cables with connectors (max. Ø 35 mm)
- Strain relief according to EN 62444
- High stability, vibration resistant
- Can be combined with IMAS-CONNECT adapter grommets

## Product types & sizes

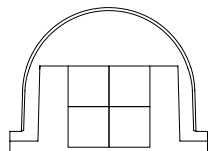
### KEL-FW-B1



Part No.	<b>42460</b>
EAN	<b>4251269332074</b>
Package quantity	<b>1</b>
For max. no. of cables	<b>1</b>
Max. cable diameter	<b>35 mm</b>
Length	<b>122 mm</b>
Width	<b>100 mm</b>

Height	<b>75 mm</b>
Mounting height	<b>75 mm</b>
No. of screw holes	<b>4</b>
Diam. of screw holes	<b>6,5 mm</b>
Suitable for grommets	<b>1 x KT large</b>

### KEL-FW-B4



Part No.	<b>42461</b>
EAN	<b>4251269332081</b>
Package quantity	<b>1</b>
For max. no. of cables	<b>4</b>
Max. cable diameter	<b>16 mm</b>
Length	<b>122 mm</b>
Width	<b>100 mm</b>

Height	<b>75 mm</b>
Mounting height	<b>75 mm</b>
No. of screw holes	<b>4</b>
Diam. of screw holes	<b>6,5 mm</b>
Suitable for grommets	<b>4 x KT small</b>

