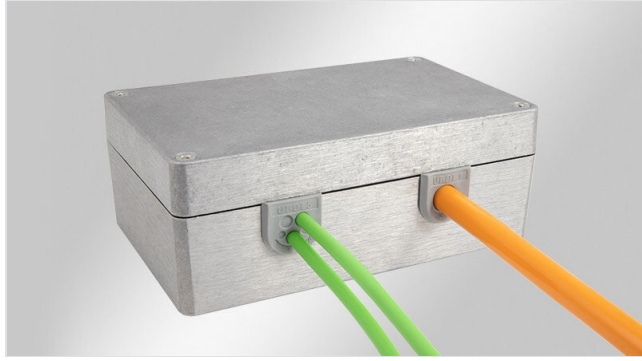


UT-DT | IP54 | U |

1.0~4.0mm



UT-DT is a... enclosure...

It has a wall thickness of 1.0~4.0mm...

It is suitable for... applications...

It meets IP54 protection level...

IP54

HL3
EN 45545-2

ECOLAB
certified

UV
ISO 4892-2A

RoHS
compliant

REACH
COMPLIANCE

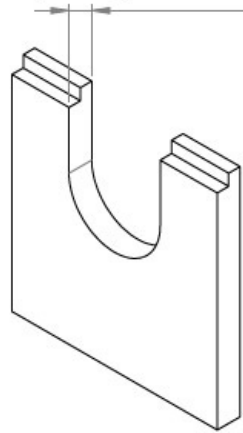
Made in
Germany

Ausbruch | Cut-out

Gehäuse mit Nut – Federsystem

Housing with tongue and groove system

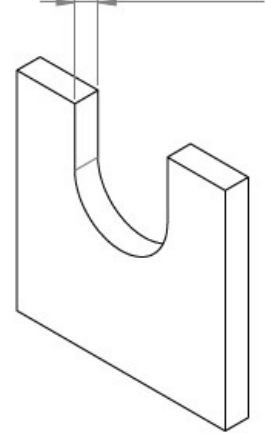
Wanddicke | Wall thickness
1,0 mm – 4,0 mm



Gehäuse ohne Nut - Federsystem

Housing without tongue and groove system

Wanddicke | Wall thickness
1,0 mm – 4,0 mm

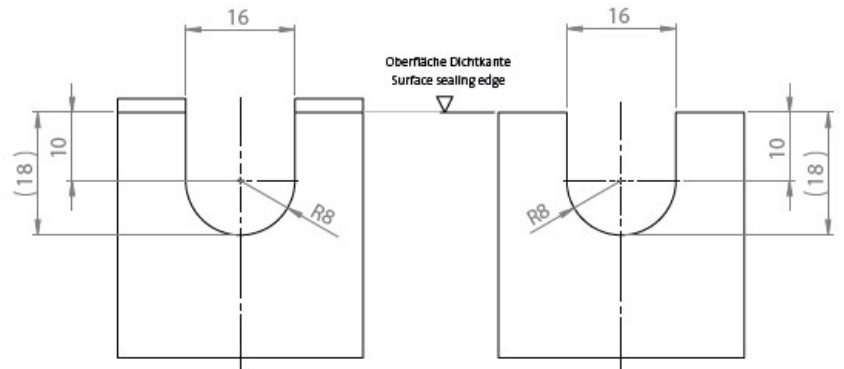


Ausbruch mit Nut

Cut-out with groove

Ausbruch ohne Nut

Cut-out without groove



1.0~4.0mm

IP54

1~4mm

1.0~4.0mm

IP54

IP (EN 60529)

IP54

1.0~4.0mm

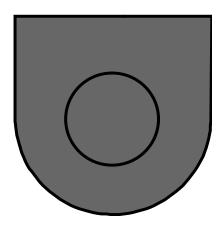
UL94-V0, IP54

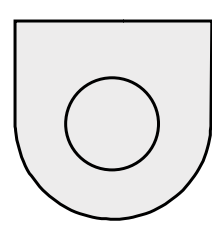
-40 C° to 100 C°

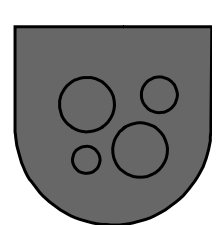
UV, ISO 4892-2A

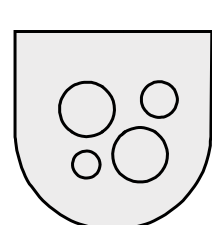
REACH

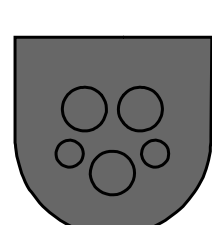
RoHS

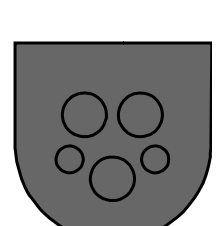
	<p>EAN □□□ □</p>	<p>56120 4251269336553 10 1 23,5 mm 23 mm</p>	<p>□□ □□ □□ □ □□ □□ □ □□ □□□ □□ □</p>	<p>11 mm 5 mm 1 mm 4 mm 1 x 1 - 11 mm</p>
--	----------------------	--	---	--

	<p>EAN □□□ □</p>	<p>56020 4251269335945 10 1 □□(RAL 7035 □ □) 23,5 mm 23 mm</p>	<p>□□ □□ □□ □ □□ □□ □ □□ □□□ □□ □</p>	<p>11 mm 5 mm 1 mm 4 mm 1 x 1 - 11 mm</p>
--	----------------------	--	---	--

	<p>EAN □□□ □</p>	<p>56121 4251269336560 10 4 23,5 mm 23 mm</p>	<p>□□ □□ □□ □ □□ □□ □ □□ □□□ □□ □</p>	<p>11 mm 5 mm 1 mm 4 mm 1 x 1 - 3.2 mm 1 x 1 - 4.2 mm 2 x 1 - 6.4 mm</p>
---	----------------------	--	---	---

	<p>EAN □□□ □</p>	<p>56021 4251269335952 10 4 □□(RAL 7035 □ □) 23,5 mm 23 mm</p>	<p>□□ □□ □□ □ □□ □□ □ □□ □□□ □□ □</p>	<p>11 mm 5 mm 1 mm 4 mm 1 x 1 - 3.2 mm 1 x 1 - 4.2 mm 2 x 1 - 6.4 mm</p>
--	----------------------	--	---	---

	<p>EAN □□□ □</p>	<p>56122 4251269336577 10 5 23,5 mm 23 mm</p>	<p>□□ □□ □□ □ □□ □□ □ □□ □□□ □□ □</p>	<p>11 mm 5 mm 1 mm 4 mm 2 x 1 - 3.2 mm 3 x 1 - 5.2 mm</p>
--	----------------------	--	---	---

	<p>EAN □□□ □</p>	<p>56022 4251269335969 10 5 □□(RAL 7035 □ □) 23,5 mm 23 mm</p>	<p>□□ □□ □□ □ □□ □□ □ □□ □□□ □□ □</p>	<p>11 mm 5 mm 1 mm 4 mm 2 x 1 - 3.2 mm 3 x 1 - 5.2 mm</p>
--	----------------------	--	---	---

