



WE
CONTROL
COMPONENTS

Bestel direct online @ CC Nederland »



Electro-flandria

Voor aanvragen uit België [klik hier »](#)

The new bulkhead KEL-FW is perfect for routing cables with/without connectors at a 90° angle over a large bending radius (max. 150 mm).

The hinged cover of the new bulkhead KEL-FW is firmly connected to the housing by a hinge and is therefore captive. This makes the system very easy and quick to mount. The KEL-FW is first screwed to the enclosure using the two rear holes and then fitted with the required cable grommets. The cover is then folded down, locked in place and screwed to the enclosure using the two front holes.

The KEL-FW is fitted with an integrated seal to achieve the high protection rating of IP65 (when using single hole grommets). An additional flat gasket for wall mounting is included in the shipment.

Cables with and without connectors up to a diameter of 35 mm can be routed and strain-relieved according to EN 62444. Retrofitting and maintenance can be carried out quickly and easily.

IP65

ECOLAB
certified

IP64

RoHS
compliant

IP55

REACH
COMPLIANCE

IP54

Made in
Germany

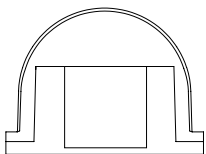


Specificaties

IP-classificatie (EN 60529)	IP65, IP64, IP55, IP54
Materiaal	Polyamide
Vlam klasse	UL94-V0, zelfdovend
Temperatuur	-40 C° tot 90 C°
Eigenschappen	zonder siliconen, halogeenvrij
Montage type	Schroefbevestiging

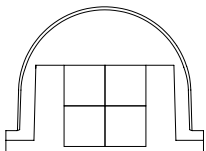
Voordelen

Producttypes en maten



Art.nr.	42460
EAN	4251269332074
Aantal	1
Voor aantal kabels	1
Max. kabeldiameter	35 mm
Lengte	122 mm
Breedte	100 mm

Hoogte	75 mm
Montage hoogte	75 mm
Aantal schroefgaten	4
Diameter van schroefgaten	6,5 mm
Geschikt voor tules	1 x KT groot



Art.nr.	42461
EAN	4251269332081
Aantal	1
Voor aantal kabels	4
Max. kabeldiameter	16 mm
Lengte	122 mm
Breedte	100 mm

Hoogte	75 mm
Montage hoogte	75 mm
Aantal schroefgaten	4
Diameter van schroefgaten	6,5 mm
Geschikt voor tules	4 x KT klein

